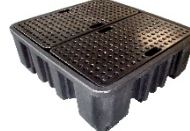


## SPECIFICATION FOR POLY DRUM SUMP PALLETS



	1840/NPP1	1840/NPP2	1840/NPP4	1840/NPP4L	1840/NPP4S
<b>Size</b>	100 x 68 x 60 cm	130 x 75 x 44 cm	138 x 129 x 48 cm	138 x 129 x 28 cm	244.5 x 66 x 27 cm
<b>Colour</b>	Black	Black	Black	Black	Black
<b>Weight</b>	19.5 kg	20.5 kg	41 kg	31 kg	34 kg
<b>205L Drums</b>	1	2	4	4	4
<b>Sump Capacity</b>	230 litres	250 litres	485 litres	250 litres	235 litres
<b>Mesh Flooring Size</b>	79 x 59 x 4 cm 1 piece	118 x 63 x 5.5 cm 1 piece	118 x 63 x 5.5 cm 2 pieces	118 x 63 x 5.5 cm 2 pieces	78 x 58 x 4 cm 3 pieces
<b>UDL</b>	400 kg	650 kg	1250 kg	1250 kg	1250 kg

**Materials:** Fully recyclable, UV stabilised, chemical resistant PE.

**Description:** Spill pallet for drum storage with a removable platform.  
 For static spill containment.  
 Compatible with most forklifts and pallet trucks (drums must be removed first).  
 Stackable for easy transportation.  
 Complies with current UK and EU environmental regulations.  
 Platform with hand inserts and holes for inspection and pump insertion.

**Compatibility:** Resistant to chemicals.

**Safety Data:** Further technical advice is available if required.

**Note:** All weights, dimensions, and other figures quoted are approximate.

Revision Date: 31-01-2018