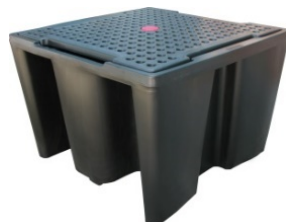


## SPECIFICATION FOR IBC SUMP PALLETS



	1840/NPIBC	1840/NPIBC2
<b>Size</b>	145 x 145 x 100 cm	245 x 145 x 57.5 cm
<b>Weight</b>	95 kg	119 kg
<b>IBC Capacity</b>	1	2
<b>Sump Capacity</b>	1120 litres	1130 litres
<b>Colour</b>	Black	Black
<b>UDL</b>	2000 kg	3000 kg

**Materials:** Fully recyclable, UV stabilised, chemical resistant PE.

**Description:** Central support always to be used when platform in place.  
 Easy to maintain and clean.  
 Compatible with most forklifts and pallet trucks, use extensions when needed.  
 Remove IBCs and empty spill pallet before moving.  
 Only single IBC spill pallet can be used with or without platform.  
 Platform with hand inserts and holes for inspection and pump insertion.

**Compatibility:** Chemical resistant.

**Safety Data:** Further technical advice is available if required.

**Note:** All weights, dimensions, and other figures quoted are approximate.

Revision Date: 07/11/2018