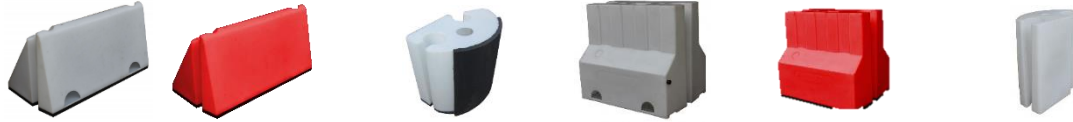




## Floodstop

### Product Summary



	0.5m Floodstop Barrier		0.5m Floodstop Multi-Hub Corner Unit	0.9m Floodstop Barrier		0.9m Floodstop Multi-Hub Corner Unit
	Self Fill	Pre Fill		Self Fill	Pre Fill	
<b>Size (L x W x H)</b>	100 x 50 x 50 cm		33 x 59 x 50 cm	75 x 99 x 90 cm		40 x 72 x 90 cm
<b>Colour</b>	White	Red	White	White	Red	White
<b>Product Code</b>	0424/0.5M/FB	0424/0.5M/FB/RED	0424/0.5M/MH	0424/0.9M/FB	0424/0.9M/FB/RED	0424/0.9M/MH
<b>Pack Quantity</b>	1		1	1		1
<b>Unit Weight</b>	10 kg		5 kg	26 kg		18 kg
<b>Supplied with Key</b>	Yes		No	Yes		No

- 0.5m Universal Key:** PVC  
Approx. 13 - 18kg  
Product code: 0424/0.5M/MH/KEY
- 0.9m Universal Key:** Linear low density polyethylene and concrete  
Two parts, an Upper Key (approx. 20kg) and Lower Key (approx. 15kg)  
Product code: 0424/0.9M/MH/KEY
- 0.5m Key Handle:** For removing keys from 0.5m Floodstop assemblies  
Stainless steel  
Approx. 200g  
Product code: 0424/0.5M/MH/KH
- 0.9m Key Handle:** For removing lower key units from 0.9m Floodstop assemblies  
Stainless steel  
Approx. 3kg  
Product code: 0424/0.9M/MH/KH
- Composition:** Linear Low Density Polyethylene  
Foam gasket: EDPM or PVC/Nitrile
- Features:** Universal keys are used to lock the modular units together.  
Each unit incorporates a unique foam gasket base creating a tight seal with the ground.  
No bolting to the ground is required.
- Properties:** Floodstop units fill with the liquids they are containing or can be filled with ballast material for added security. Pre-fill units filled with water ballast should be placed between self-fill units. This combined weight of the liquid being blocked or contained and the weighted connection keys, secures the barriers in position. If situated on a porous surface, then the contained liquids would eventually penetrate standard ground. If Floodstop is to be used as a temporary bund, then it is suggested to use an optional groundsheet (available separately) that helps create a watertight container.
- Safety Data:** Further technical advice is available if required.
- Note:** All weights, dimensions, and other figures quoted are approximate.

Email: [sales@darcy.co.uk](mailto:sales@darcy.co.uk) Call: 0800 0370 899